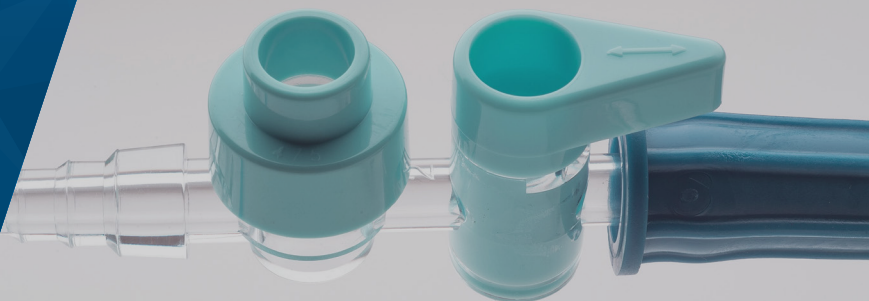


# 475 Legacy ACE Connector®



The Dale 475 Legacy ACE Connector (Access Controller for Enteral) minimizes the chance of messy leaks and protects you from potentially infectious splashback while shielding your patients from external contamination. The Dale ACE Connector controls fluid flow into and out of most NG, feeding tubes, and other enteral tubes such as; Nasoenteric, Salem Sump™, Levin, PEG\*, PEJ\*, BRTs\*, and most G-J tubes\* and therefore replaces the need for 5-in-1 connectors and enteral feeding Y-port adapters.

\*18FR and higher

## Key Features

- ◆ A convenient, compact device for controlling fluid flow into or out of an NG or Stomach tube.
- ◆ Remains closed to the atmosphere at all times for optimal infection protection when connected.
- ◆ Long-lasting silicone adapter, preassembled in package
- ◆ Can be used as a replacement for a Y connector on a PEG, PEJ, or BRT tube, or it can be used in conjunction with Y connectors on Feeding tubes in which the Y Connector is not removable.
- ◆ Replaces 5-in-1 connectors.
- ◆ Protects the clinician from exposure to potentially infectious gastric fluids by eliminating the need to disconnect the device when feeding, suctioning, irrigating, delivering medication, or withdrawing gastric residuals.
- ◆ Reduces risk of cross contamination, eliminates mess and formula loss by maintaining a closed system (no disconnect).
- ◆ Has a simple ON/OFF handle versus a confusing free spinning stopcock to control fluid flow.
- ◆ Has a built in Needleless Syringe Port Seal - accepts most catheter tip 50-60cc syringes.
- ◆ Designed to physically prevent the administration of enteral formula into an I.V. line.
- ◆ Incompatible with luer connectors.
- ◆ Meets ANSI/AAMI ID 54:1996/(R)2012
- ◆ DEHP Free
- ◆ Not made with natural rubber latex.

Product #	Description	Quantity
475	Legacy ACE Connector	50/box
485	ACE Connector with ENFit Connections	50/box

HCPCS Codes: Syringe Fed - B4034 | Pump Fed - B4035 | Gravity Fed - B4036 • Patent [dalem.com/patents](http://dalem.com/patents)



# 475 Legacy ACE Connector®

Features	Clinical Advantages
<b>Supports a Closed Enteral System</b>	<ul style="list-style-type: none"><li>Protects clinician and patient from infectious splash back</li><li>No disconnect required to irrigate or administer liquid medication or withdraw gastric residuals</li><li>No flip or tethered closure caps to worry about</li></ul>
<b>Auto-Seal Catheter Tip Syringe Port**</b>	<ul style="list-style-type: none"><li>Accepts most 50-60cc catheter tip syringes</li><li>Provides in-line irrigation, medication delivery, gastric residuals and lavage without disconnect</li><li>Split septum silicone syringe port seal means no cap to flip or pop off</li><li>Recessed opening to eliminate hand contact and reduce contamination</li></ul>
<b>On/Off Handle</b>	<ul style="list-style-type: none"><li>Very simple to operate, minimizing human error</li><li>Intuitive “ON” and “OFF” control handle</li><li>Provides easy and clean removal of suction tubing or feeding set for ambulation of patient</li></ul>
<b>Compact Safe Linear Design</b>	<ul style="list-style-type: none"><li>Streamlined profile ideal for attachment to small bore feeding tubes, feeding admin sets, PEG, PEJ, BRTs, and most G-J enteral tubes</li><li>Replaces 5-n-1 connectors and enteral feeding tube Y-port adapters</li><li>Distal barbed tapered catheter connector firmly and securely attaches to NG and Stomach tubes of various diameters</li><li>Proximal barbed tapered catheter connector firmly and securely attaches to wall or portable suction, when flexible silicone adapter is removed</li><li>Flexible silicone adapter accepts all enteral delivery sets and bolus feeding syringes</li></ul>
<b>Reduces Misconnections</b>	<ul style="list-style-type: none"><li>Designed to physically prevent the administration of enteral formula into an I.V. line</li></ul>

\*DEHP Free, Not made with natural rubber latex, and Needle Free

\*\*Medications must be crushed properly to prevent potential clogging

\*\*\*Dale ACE Connector is also available with ENFit connections as Product No 485

**Learn More**

