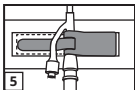
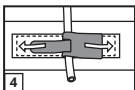
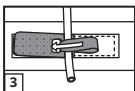
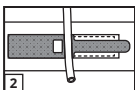
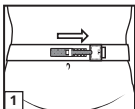


Hold-n-Place[®] Foley Catheter Tube Holder

**Additional Indications - Supra-pubic
Foley Catheters or PEG tubes**

Waist Band Application

1. To secure the catheter in place, position the waist band around the abdomen, above the wound site. No shaving necessary. The green catheter locking tab should be centered over the drain site. After the band has been positioned, press locking tab onto the waist band.
2. Place catheter over white stitching of green tab.
3. With catheter in desired position, insert the narrow green tab over catheter and through the square opening so the green tab overlaps.
4. Lock catheter in position by pulling green tabs in opposite directions. Secure tabs in place. To reposition catheter: raise either green tab, adjust catheter, and refasten tab.
5. Another method of securement is to locate the Y port of the proximal end of the catheter into the locking device.



For single patient use. Disposable

For an application video please visit www.dalemed.com

Dale medical products are available from your preferred hospital/medical supply dealer.

Not made with natural rubber latex.

Dale & Hold-n-Place are registered trademarks of Dale Medical Products, Inc. in the USA, EU, and UK