

Dale Stabilock

TAPING INSTRUCTIONS

For best tube security with any type of cloth tape it is best to wrap tape around the tube 1x BEFORE pressing the Tubing Channel down onto the tube.

**As per the Instructions for Use:
To secure tube into Tubing Channel**



Wrap strong adhesive tape 1x around the tube where the Tubing Channel will cover the tube



Press Tubing Channel down over the tube



Wrap tape around tube and Tubing Channel



Wrap tape a minimum of 1" beyond the end of the Tubing Channel

Dale® Stabilock

Endotracheal Tube Holder

Application Instructions

1. Clean tube. Let dry.
 2. Apply Adhesive Base.
 - Apply skin prep
 - Remove liner and place Base at desired location **(A1-A4)**. Trim if needed.
 3. Press neckband onto hook portion of the Base, making sure the Tubing Channel is aligned with the endotracheal tube. **(B)**
 4. Open the fastener tabs located at both ends of the neckband and wrap the band around the head just below the ears. Secure the fastener tabs to the outside of the neckband. **(C)**
 5. Secure tube into Tubing Channel
 - wrap strong adhesive tape 1x around the tube where the Channel will cover the tube
 - press Channel down over the tube **(D)**
 - wrap tape around tube and Channel **(E)**
- Alternate Taping Method:
- press Channel onto the tube
 - tightly wrap strong adhesive tape around tube and Channel. **Wrap tape a minimum of 1" beyond the end of the Channel (E)**
6. Ensure neckband security by readjusting the fastener tabs as necessary.

Change tape as necessary.

Change after 3 days or sooner if necessary.

Removal Instructions

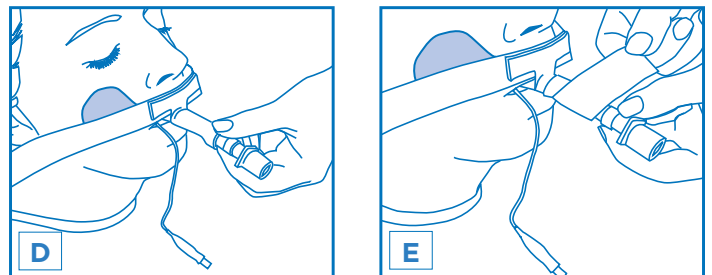
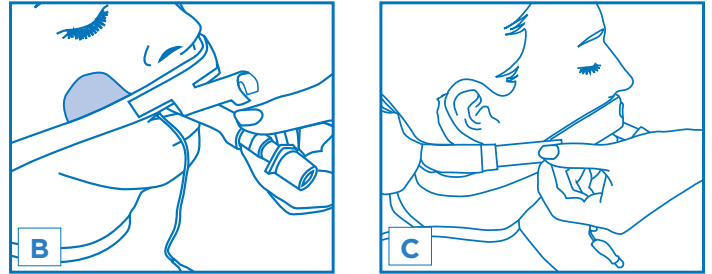
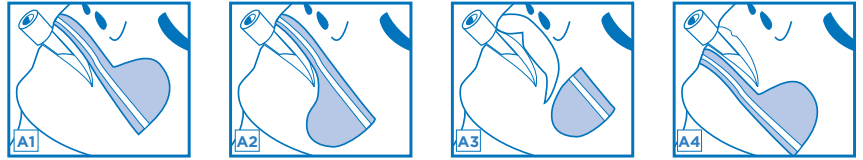
Device should be removed with care to avoid skin trauma. Re-apply skin prep if another device is to be applied.

Tube Repositioning

Open fastener tabs. Hold Adhesive Base down while peeling neckband from base. Reposition tube. Press back onto base and secure fastener tabs.

Recommendations

- To prevent skin ulcerations or skin tears, **assess patient skin and medical conditions prior to applying.** Monitor daily or more frequently.
- **Dale recommends repositioning the endotracheal tube often** to help prevent injury to the lips and underlying tissues due to unrelieved pressure.
- **Dale strongly recommends supporting the ventilator tubing** to reduce pressure on the patient's face.



ORDERING INFORMATION

Product Number	Size	Quantity
270	Fits endotracheal tubes 7.0-10.0mm	10/Box

Dale[®]
www.dalemed.com

Dale is a registered trademark of Dale Medical Products, Inc.
©2020 Dale Medical Products, Inc. All rights reserved.

AD-028 REV D